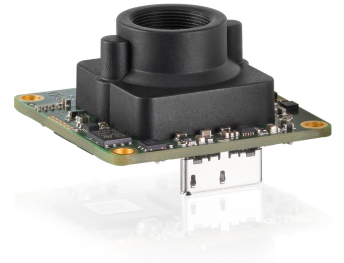
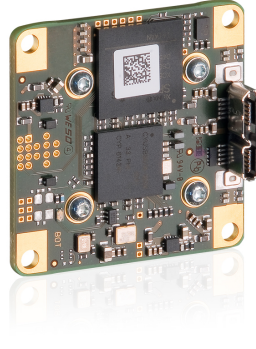
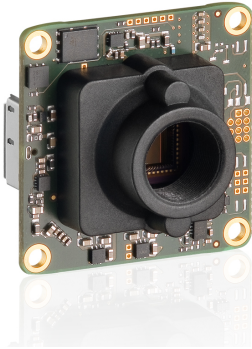


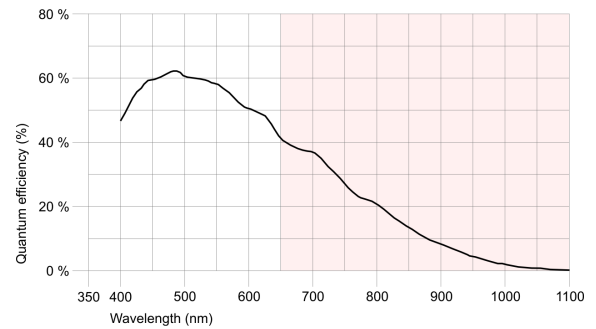
UI-3481LE-M-GL



Specification

Sensor

Sensor Technology	CMOS Mono
Manufacturer	Aptina
Resolution (h x v)	2560 x 1920
Color depth (sensor)	12 bit
Color depth (camera)	12 bit
Pixel Class	5 MP
Sensor Size	1/2"
Shutter	Rolling shutter/Global start shutter
max. fps in Freerun Mode	15.2
Binning Modes	Color
Subsampling Modes	Color
Sensor Model	MT9P031STM
Pixel size	2.2 μ m
Optical Size	5.632 mm x 4.224 mm



Design

Interface	USB 3
Lens Mount	M12-long
I/O In	1 x TTL
I/O Out	1 x TTL
I/O RS-232	-
I/O GPIO	2
I/O I2C	1
IP code	-
Dimensions H/W/L	36.0 mm x 36.0 mm x 20.2 mm
Mass	12 g
Power supply	USB Cable

Subject to technical modifications

UI-3481LE-M-GL

Pin assignment I/O connector

1	USB Power supply (VCC) 5V
2	USB Ground (GND)
3	Digital input (+)
4	Digital output (+)
5	GPIO1
6	GPIO2
7	I2C bus clock signal
8	I2C bus data signal

