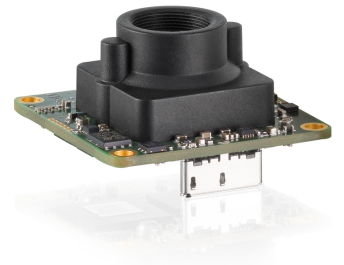
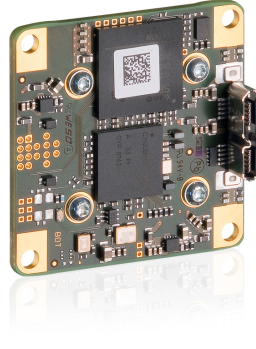
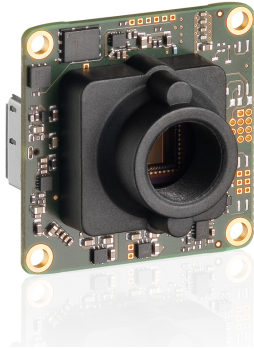


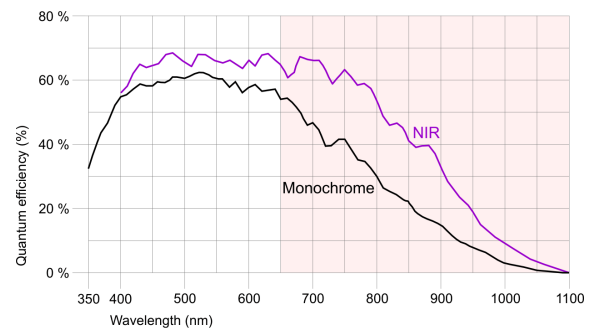
## UI-3241LE-NIR-GL



## Specification

### Sensor

Sensor Technology	CMOS Mono
Manufacturer	e2v
Resolution (h x v)	1280 x 1024
Color depth (sensor)	10 bit
Color depth (camera)	12 bit
Pixel Class	1.x MP
Sensor Size	1/1.8"
Shutter	Rolling shutter/Global shutter/Global start shutter
max. fps in Freerun Mode	60.0
Binning Modes	M/C automatic
Subsampling Modes	-
Sensor Model	EV76C661ABT
Pixel size	5.3 $\mu\text{m}$
Optical Size	6.784 mm x 5.427 mm



### Design

Interface	USB 3
Lens Mount	M12-long
I/O In	1 x TTL
I/O Out	1 x TTL
I/O RS-232	-
I/O GPIO	2
I/O I2C	1
IP code	-
Dimensions H/W/L	36.0 mm x 36.0 mm x 20.2 mm
Mass	12 g
Power supply	USB Cable

Subject to technical modifications

## UI-3241LE-NIR-GL

### Pin assignment I/O connector

1	USB Power supply (VCC) 5V
2	USB Ground (GND)
3	Digital input (+)
4	Digital output (+)
5	GPIO1
6	GPIO2
7	I2C bus clock signal
8	I2C bus data signal

