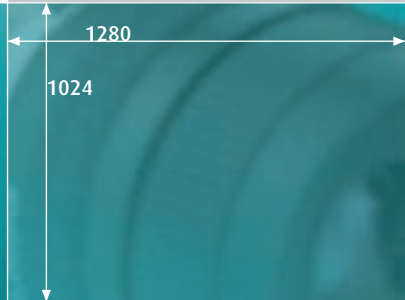




iDS



1280
1024

uEye[®] UI-2240-C/M

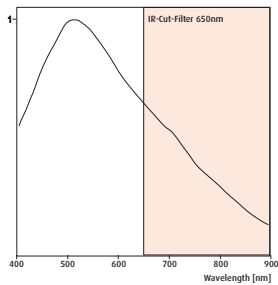
1,3 Mega pixels SXGA Camera with 1/2" CCD Sensor

uEye® UI-2240-M / UI-2240-C

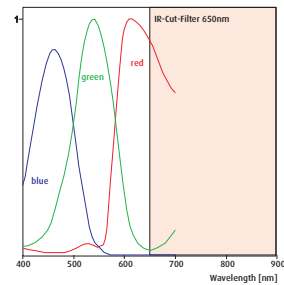


The uEye® Family

uEye® stands for a family of extremely compact, low-cost cameras for professional use in automation, quality assurance, security technology and non-industrial applications. Through the use of the widespread USB technology, the cameras can be interfaced with a vast variety of systems without any problems.



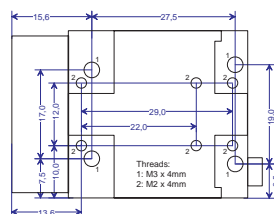
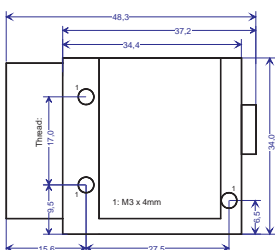
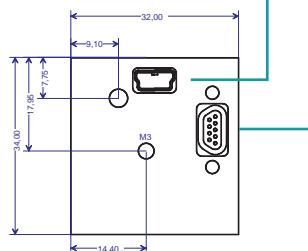
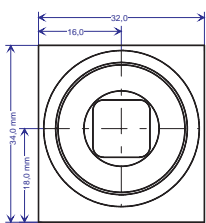
Sensor characteristics UI-2240-M



UI-2240-C

Screw-mounted Micro Sub-D connector for USB, Trigger and Digital-Out

Conventional USB Mini-B connector



Dimensions: uEye® CCD models without memory. The depth of the memory models housing is +7mm

The characteristics at a glance

Interface	USB 2.0
Sensor Technology	CCD (Sony)
Model description (color)	UI-2240-C
Model description (Mono)	UI-2240-M
Resolution (h x v)	1280 x 1024
Resolution Category / Pixel Class	SXGA / 1,3 MP
Sensor size	1/2"
Shutter	Global
max. fps in Freerun Mode at full resolution	15 fps
max. fps in SW Trigger Mode at 1 ms exposure	14 fps
Exposuretime in Freerun Mode	83 µs - 1,46 s
Exposuretime in Trigger Mode	83 µs - 10 min
AOI Modes	H + V ²
AOI with 320 x 240 Pixels (CIF)	43 fps
Subsampling Modes	-
Subsampling Factors	-
Resolution, fps	-
Binning Modes	V ² (Mono)
Binning Method	V: Sum
Binning Factors	x2, x4
Resolution, fps	1280 x 512, 23 fps 1280 x 256, 31 fps
Mono: Maximum Gain	13,6x
Farbe: Maximum Gain RGB/Master	4x /8,9x
Additional Gain Boost with Factor	2x (Mono)
Sensor Model	ICX205
Pixel Clock	5 - 30 MHz
Pixelpitch in µm	4,65
Full Well Capacity	12.000 e-
Optical Size	5,95 x 4,76 mm
Aspect Ratio	5:4
Exact Real Diagonal	7,6 mm, 1/2,1"
Current consumption at 5 V	190 - 290 mA

In scope of delivery:

Powerful, easy to handle uEye SDK
uEye Demo and Programexamples
executable and Source Code.
TWAIN, Active-X and Direct Show
(WDM) drivers
Interfaces for Activision Tools,
Common Vision Blox, HALCON,
LabVIEW and Neurocheck

Driver for Windows 2000, XP, VISTA
and Linux - WindowsCE on request

² = Use increases frame rate

