

**IDS**

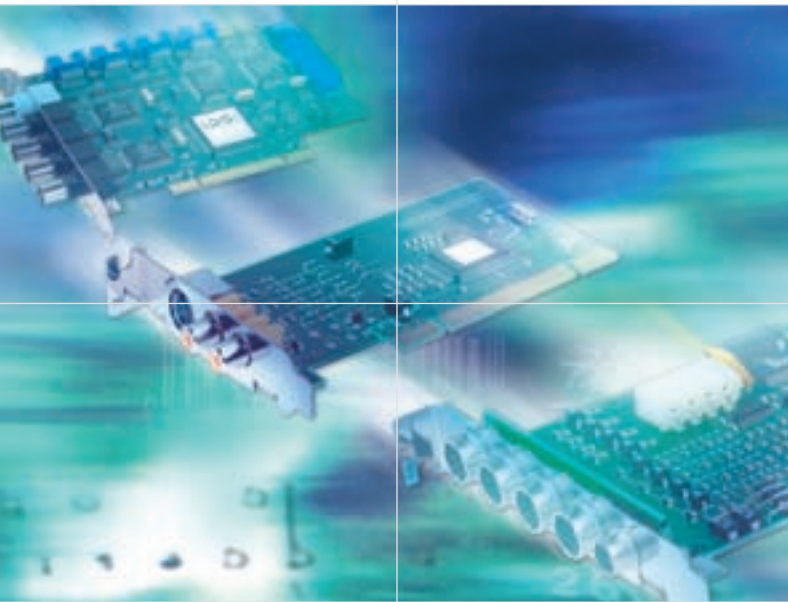


**EAGLE**

**FALCON**

Your imagination is our challenge

## PCI and PCI Express Frame Grabbers



The FALCON series of frame grabbers ranks among the world-wide best selling video cards for professional applications. FALCON and EAGLE frame grabbers are used not only in industry, but also in medical and security technology.

The unique software interface, the FALCON SDK, provides easy and quick integration into your application. Sample programs in source code serve as a programming model for integrating the boards into your existing software via the SDK or the Vfw, WDM or TWAIN driver.

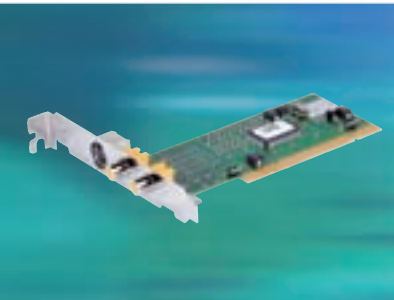
FALCON frame grabbers support all analog monochrome and color cameras that work with standard video signals.

With long-term availability, continuous model upgrading and our product support, we offer you the security you need for your specific requirements: from industrial automation to medical and security technology, from dactylogram systems and face recognition through to facility management systems and ultrasonic, microscopic and X-ray systems of all kinds.

### Features at a glance

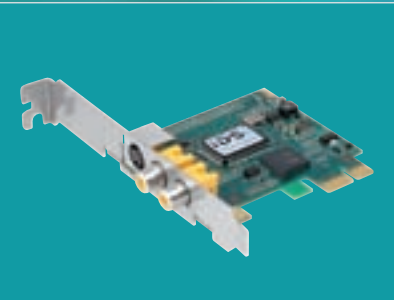
- Up to 16 video inputs
- One video output (FALCONplus/plus Express, FALCONquattro/quattro Express)
- High speed switching (FALCONplus/plus Express, FALCONquattro/quattro Express)
- Up to 12 digital inputs and 8 digital outputs
- Multi-board support for all boards (up to 16 frame grabbers = 4 x FALCONquattro)
- Free scalability of image sizes
- Text and graphic overlay on live images / freeze frames by using DirectDraw
- Hardware watchdog (FALCONplus/plus Express, FALCONquattro/quattro Express)
- Software Development Kit (SDK) for Windows 2000, XP, Vista and Linux
- Easy programming and examples in source code
- WDM and TWAIN drivers available free of charge
- Easy integration of external codecs, such as MPEG4, through FALCAVI DLL





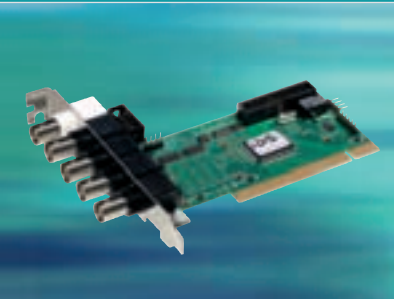
**FALCON**

- 1 S-VHS input, 2 CVBS inputs
- Programmable EEPROM
- PAL, NTSC, SECAM
- PCI interface
- Also available as FALCON-LP for low profile PCs



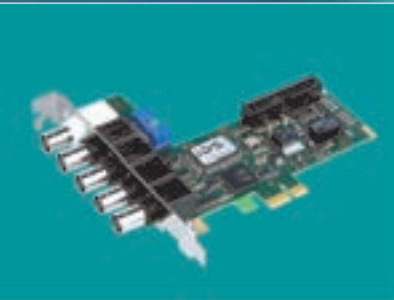
**FALCON Express**

- 1 S-VHS input, 2 CVBS inputs
- Programmable EEPROM
- PAL, NTSC, SECAM
- 1 PCI Express interface
- Also available as FALCON Express-LP for low profile PCs



**FALCONplus**

- 4 CVBS inputs
- 1 CVBS output
- Programmable EEPROM
- Fast switching speed
- 4 triggers, 8 digital inputs, 8 digital outputs
- Hardware watchdog
- PCI interface



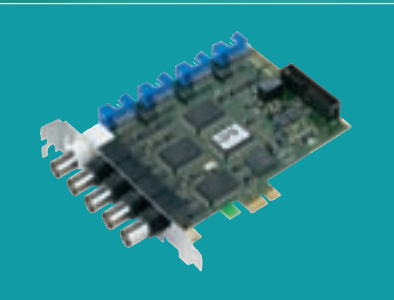
**FALCONplus Express**

- 4 CVBS inputs
- 1 CVBS output
- Programmable EEPROM
- Fast switching speed
- 4 triggers, 8 digital inputs, 8 digital outputs
- Hardware watchdog
- 1 PCI Express interface



**FALCONquattro**

- 16 (4x4) CVBS inputs
- 1 CVBS output
- Parallel frame grabbing of four cameras
- Programmable EEPROM
- Fast switching speed
- 4 triggers, 8 digital inputs, 8 digital outputs
- Hardware watchdog
- Slot extensions optionally available
- PCI interface



**FALCONquattro Express**

- 16 (4x4) CVBS inputs
- 1 CVBS output
- Parallel frame grabbing of four cameras
- Programmable EEPROM
- Fast switching speed
- 4 triggers, 8 digital inputs, 8 digital outputs
- Hardware watchdog
- Slot extensions optionally available
- 1 PCI Express interface



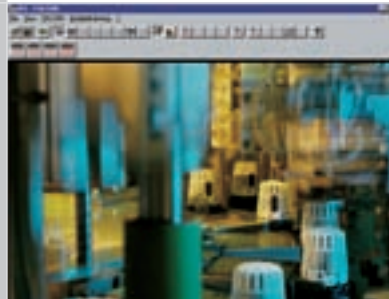
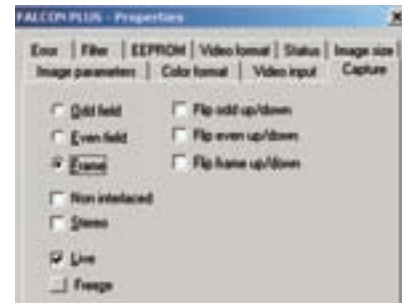
**EAGLE**

- 4 CVBS inputs
- Programmable EEPROM
- Fast switching speed
- 12-pin Hirose connector with 12V power supply to the cameras
- 1 trigger and 1 digital output
- PCI interface

**FALCON SDK - It's so easy**

**SDK: all you need**

- **Initialization and termination**  
Establishing and terminating the connection to the hardware
- **Image acquisition and memory management**  
Allocation and switching of image memories, etc.
- **Double and multiple buffering**  
Creation of an image memory list, ring buffer, locking of memories, etc.
- **Selection of operating modes and read-back of settings**
- **Setting and resetting all parameters**
- **Reading from and writing to the EEPROM**
- **Saving and loading images**
- **Video display**
- **DirectDraw functions**  
Overlay on/off,  
Overlay display  
DD back buffer mode  
DD primary surface mode  
DD overlay surface mode
- **Event handling**  
(interrupt-driven frame grabbing)



■ **The FALCAVIRECORD library**

By using external codecs (not included in delivery) which are installed in the system, the comprehensive extension library supplied with the frame grabber allows recording video sequences or whole movies on hard disk in different formats (e.g. DivX, MPEG4, MPEG2, etc.). The library also supports deinterlacing.

■ **Real-time and overlay**

The video signals can be shown as live images on the monitor. Flicker-free overlay information such as the date or a crosshair can be inserted with DirectDraw under Windows. The FALCON SDK already provides all the necessary prerequisites.





### Color and monochrome-frame grabbers for standard video signals

- Up to 16 video inputs
- Models with video output
- Multi-board support for all boards (simultaneous use of PCI and PCI Express also supported)
- Models with parallel frame grabbing
- Software Development Kit (SDK) for Windows 2000, XP, Vista and Linux



### Other IDS products

- Digital cameras with CCD and CMOS sensors
- Lenses
- Camera accessories
- Image processing software



Your imagination is our challenge

**ids** ■ ■ ■  
[www.ids-imaging.com](http://www.ids-imaging.com)

IDS Imaging Development Systems GmbH  
Dimbacher Straße 6-8  
74182 Obersulm  
Phone +49(0)7134/96196-0  
Fax +49(0)7134/96196-99  
[sales@ids-imaging.com](mailto:sales@ids-imaging.com)

IDS Imaging Development Systems, Inc.  
One Broadway, 16th floor  
Cambridge, MA 02142, USA  
Phone +1(617) 401-2395  
Fax +1(617) 401-2398  
[usasales@ids-imaging.com](mailto:usasales@ids-imaging.com)

May 2008  
Subject to change without notice